

BUSINESSES AND SERVICES

Berkley Feed and Seed
Peterson Department Store
Petry Hardware
Jordets Tavern
Rustads
Kindred State Bank
Rich Garage
Farmers Elevator Lumber Department
Nickolson Barber Shop
Kindred Tribune
A & R Cafe
Runsvold Funeral Home
Olsons Meat Market
Postoffice
Jensen Variety Store
Vikers Food Market
Jims Tavern
Kindred Hotel and Cafe
Kindred Oil Company
Automatic Laundry
Farmers Union Oil Company
Kindred Farmers Elevator Company
Hagen Electric
Owen Electric
Kindred Implement
Swenson Radio & TV
Evenson Blacksmith Shop
Moderow Beauty Parlor
Sperry Bros. Apiaries
Overboe Potato Warehouse
Andvik Potato Warehouse
Cass County Electric Co-op Home Office
Otter Tail Power Company
Northwestern Bell Telephone Company
Kindred Plumbing & Heating
Hillmer Boelter, Rusco Window Co.
Reuben Guenther, Roofing
Gilbertson Nursery
Thompson Flying Service
Lyle Miller, Fertilizer Equipment

Lykken Woodworking
Arne Sather, Carpenter
John Skari, Carpenter
Great Northern Railway
Fritz Truck Line
Bus Service
Korner Service and Cafe
American Crystal Sugar Beet Dump



MAIN STREET

ANNUAL EVENTS

Open Horseshoe Tournament at Mill Site Park in June.

Fall Festival and School Homecoming latter part of September.

Fireworks Display July 4th.

Flower Show in August.

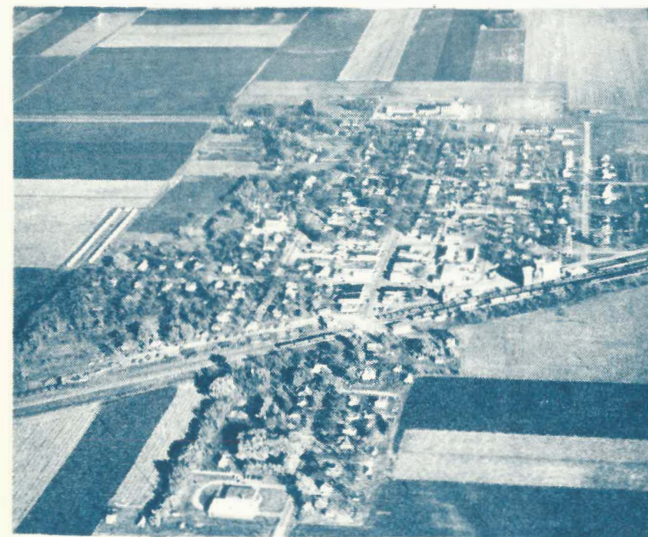
American Legion Baseball Program.

Roller Skating.

Archery Tournament.

Hobby Show.

This brochure has been prepared by the Kindred Community Betterment Committee and the Kindred Development Corporation.



Welcome to KINDRED

'The City of Flowers'



FACTS ON KINDRED

The City of Kindred was founded in the year 1880 and now has an estimated population of 625.

Kindred Farmers Elevator handled over 700,000 bushels of grain in 1964.

The Kindred Public School which has increased from 221 students in 1959 to a present 457 students is a fully accredited school with a district valuation of \$2,300,000. Ten school buses furnish transportation.

Volunteer Fire Department with two pumper trucks serves city and surrounding rural area.

City Park with Roller Rink and Auditorium.

Mill Site Park on Sheyenne River with horse-shoe courts and picnic facilities.

Airport with half mile runway.

Modern Street Lighting.

New Lighted Christmas Decorations.

Hardsurface Streets.

Water and Sewer.

Two Churches, three denominations.

20,000 Tons of Beets shipped out in 1964.

Thirty Car Loads of Potatoes shipped out annually.

100,000 Pounds of Honey produced by Sperry Brothers.

Bank Deposits Total \$2,600,000.00.

Full Time Police.

Ben Gilbertson has grown the states largest, or possible the worlds largest squash which weighed 201 pounds.

NEW BUILDINGS AND ADDITIONS IN THE LAST TEN YEARS

Farmers Union Oil Company

Kindred State Bank Addition

Farmers Elevator Company Lumber Yard

Cass County Electric Warehouse

Cass County Electric Office Addition

Northwestern Bell Telephone Dial House

School Addition

Kindred Lutheran Church Education Building

Sperry Brothers Honey Processing Warehouse

New fronts on five business buildings

Eleven new residences

Twelve Unit Home for the Aged now being built.

New School Bus Garage under construction.

ORGANIZATIONS

Civic & Commerce Association

American Legion Post and Auxiliary

Lions Club

Community Betterment Committee

Kindred Development Corporation

Boy Scout Troops

Cub Scout Packs

Hommakers Clubs

Boys and Girls 4-H Clubs

Junior Rifle Club

Archery Club

Wildlife Federation

Future Farmers of America

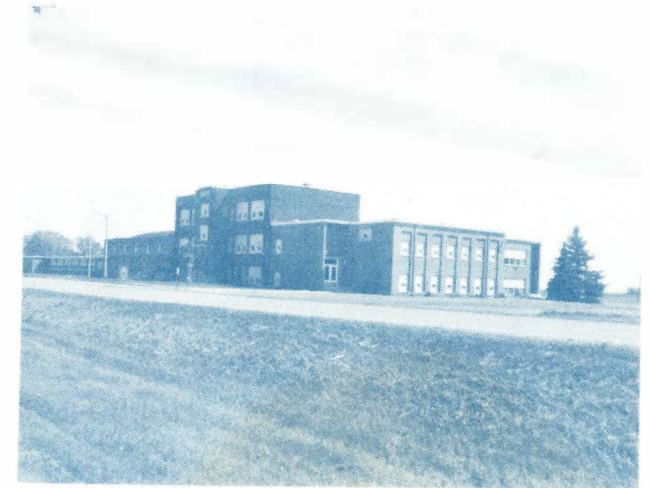
Horseshoe Club

Parent-Teachers Association

Hobby Club



City Park with Roller Rink and Auditorium



Kindred Public School